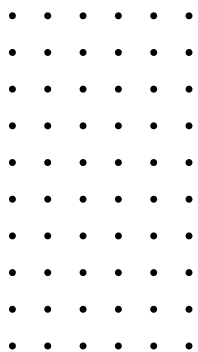
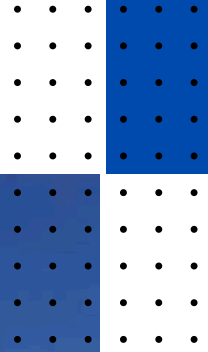




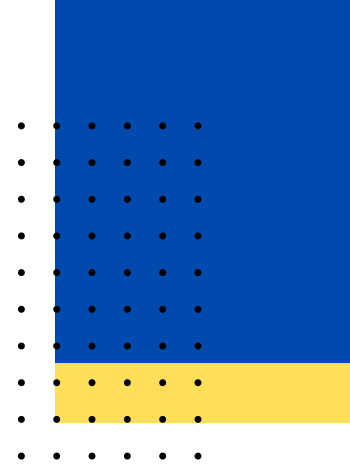
MACRO MP PTY LTD



COMPANY PROFILE

www.Macromp.com

TABLE OF CONTENT



01. Company Overview

02. Our Process

03. Company Services

04. Mission Statement

04. Health and Safety

05. Company Contact Details



COMPANY OVERVIEW

About Us

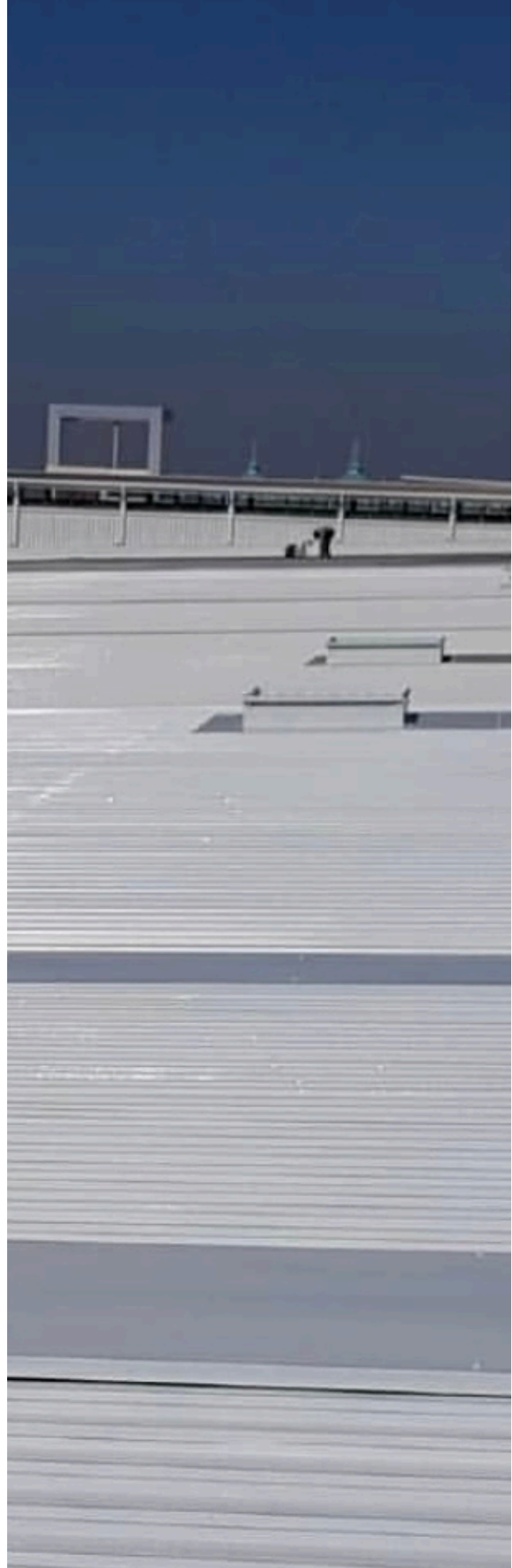
MacroMP PTY LTD is a business based in Johannesburg, South Africa, specializing in exterior and interior spray painting services. The business offers a wide range of services including pavement spray painting, roof spray painting, protective coating for pavements, roof waterproofing and sealing, surface restoration and resurfacing, customized color finishes, high-quality, long-lasting paint solutions, as well as free estimates and consultations.

The unique selling point of MacroMP PTY LTD is its comprehensive range of services for both commercial and residential clients.

OUR PROCESS

ROOF SPRAY PAINT:

- Purpose: Roof spray painting is primarily used to protect and enhance the appearance of roofs. In addition to aesthetic benefits, specialized coatings can provide added benefits such as UV protection, heat reflection, and weatherproofing.
- Materials: Most commonly, metal roofs, tiled roofs, and concrete roofs are spray-painted with coatings that resist corrosion, algae growth, and fading.
- Process: The surface of the roof is typically cleaned, sometimes using high-pressure water, and then coated with a primer followed by the desired paint or protective finish. This is particularly valuable for prolonging the life of aging roofs.



OUR PROCESS

PAVEMENT / MARKINGS SPRAY PAINT:

- Purpose: Pavement spray painting is widely used for both aesthetic and functional purposes, such as applying road markings, parking lot lines, and even decorative finishes for driveways and walkways.
- Materials: Specialized durable paints that can withstand heavy traffic, weather, and wear are used. These often include thermoplastic paints or epoxy-based paints.
- Process: Pavements are cleaned, and depending on the type of surface, a primer may be applied. Then the paint is sprayed on to create sharp, defined lines or larger coverage areas for decorative or protective purposes.



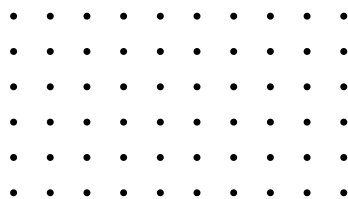
OUR PROCESS

Waterproofing:

- Purpose: Waterproofing spray systems involve the application of waterproof coatings on roofs, walls, and basements. This is essential to prevent water damage, leaks, mold growth, and degradation of surfaces over time.
- Materials: Waterproof coatings often include materials like polyurethane, elastomeric coatings, or silicone-based products that form a water-resistant barrier.
- Process: Similar to other spray painting applications, surfaces are cleaned, prepared, and coated with the waterproofing solution. This method is preferred for its quick application and ability to cover complex surfaces.

Gutter Cleaning and Protective Coating:

- Purpose: Spray painting also extends to cleaning and protecting gutters. After cleaning, spray-applied coatings can help protect the metal from rust and corrosion, extending the life of the gutters.
- Materials: Anti-corrosion paints or sealants are typically used to coat gutters.





OUR SERVICES



ROOF SPRAY PAINTING



PAVEMENT / MARKINGS SPRAY PAINTING

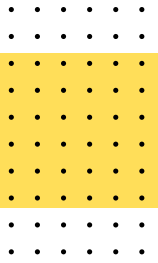


GUTTER CLEAN AND SPRAY PAINTING



ROOF / WALL WATERPROOFING

MISSION STATEMENT



- At Macromp, our mission is to deliver high-quality, long-lasting spray painting solutions that enhance the beauty, protection, and functionality of your property.
- Specializing in roof and pavement, markings spray painting, waterproofing, and gutter cleaning, we are committed to using advanced techniques and environmentally conscious materials to provide efficient, reliable, and affordable services.
- Our goal is to exceed customer expectations by ensuring every project is completed with precision, professionalism, and a dedication to lasting results.

HEALTH AND SAFETY

At Macromp, the health, safety, and well-being of our employees, customers, and the public are of paramount importance. We are committed to conducting all our spray painting, waterproofing, and gutter cleaning operations in a safe, responsible, and environmentally sustainable manner. This policy outlines our commitment to ensuring a safe working environment and reducing potential risks associated with our services.

1. Commitment to Safety

We are dedicated to complying with all applicable health and safety laws, regulations, and industry standards.

We commit to continuous improvement in health and safety practices through training, communication, and regular safety audits.

2. Employee Responsibilities

All employees must adhere to company safety protocols and wear the appropriate Personal Protective Equipment (PPE) at all times while on site. This includes, but is not limited to:

Respiratory protection (e.g., masks) to guard against inhalation of paint fumes and chemicals.

Protective clothing and gloves to minimize skin contact with chemicals.

Safety glasses or face shields to protect the eyes from paint particles and splashes.

Employees are responsible for reporting any potential hazards, unsafe conditions, or incidents immediately to their supervisor.

All workers must undergo regular safety training sessions, including hazard recognition, safe equipment operation, and emergency response procedures.

3. Risk Assessment and Hazard Control

Before starting any project, a thorough risk assessment will be conducted to identify potential hazards. Control measures will be put in place to mitigate any risks identified.

Special care will be taken when working at heights (e.g., roof spray painting), with proper fall protection equipment being mandatory. This includes using scaffolding, harnesses, and safety nets as required.

We will ensure that the work environment is adequately ventilated to reduce exposure to fumes and other airborne contaminants during spray painting operations.

Safe handling, storage, and disposal of chemicals, paints, and other hazardous materials will be strictly enforced.

4. Equipment Safety

All spray painting equipment, tools, and machinery will be regularly inspected and maintained to ensure they are in safe working condition.

Employees will receive proper training on how to safely operate equipment and will be instructed to use tools only for their intended purposes.

5. Environmental Safety

We are committed to minimizing environmental impact through responsible practices, including the use of environmentally friendly paints and coatings whenever possible.

Waste management procedures, such as the proper disposal of paint residues and cleaning materials, will be followed to prevent contamination of the environment.

Spill kits and first aid kits will be available at every worksite to respond to chemical spills or accidents.

6. Emergency Procedures

Emergency procedures will be in place at every job site, and employees will be trained to respond effectively to incidents, including fire, chemical spills, and medical emergencies.

First aid kits will be available on-site, and designated staff members will be trained in first aid.

In the event of an accident or incident, it will be immediately reported, investigated, and reviewed to prevent recurrence.

7. Customer and Public Safety

Our team will ensure that customers, clients, and the general public are kept safe during spray painting operations. Clear signage and barriers will be placed to restrict access to work areas.

Paint fumes and overspray will be controlled to minimize exposure to non-employees. Measures such as drop sheets, spray booths, or tarpaulins will be used to contain the work area.

8. Continuous Improvement

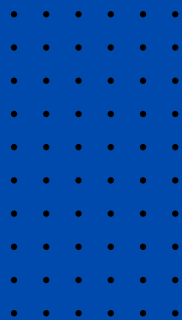
We are committed to continually improving our health and safety practices by staying up-to-date with industry developments, regularly reviewing our policies, and encouraging feedback from employees and clients.

Safety audits and inspections will be conducted to ensure compliance with this policy and identify areas for improvement.

Signed:
Macromp Management



REVIVE AND REFRESH



Macromp6@gmail.com

Www.Macromp.com

0(81) 535 7823

JOHANNESBURG, SOUTH AFRICA